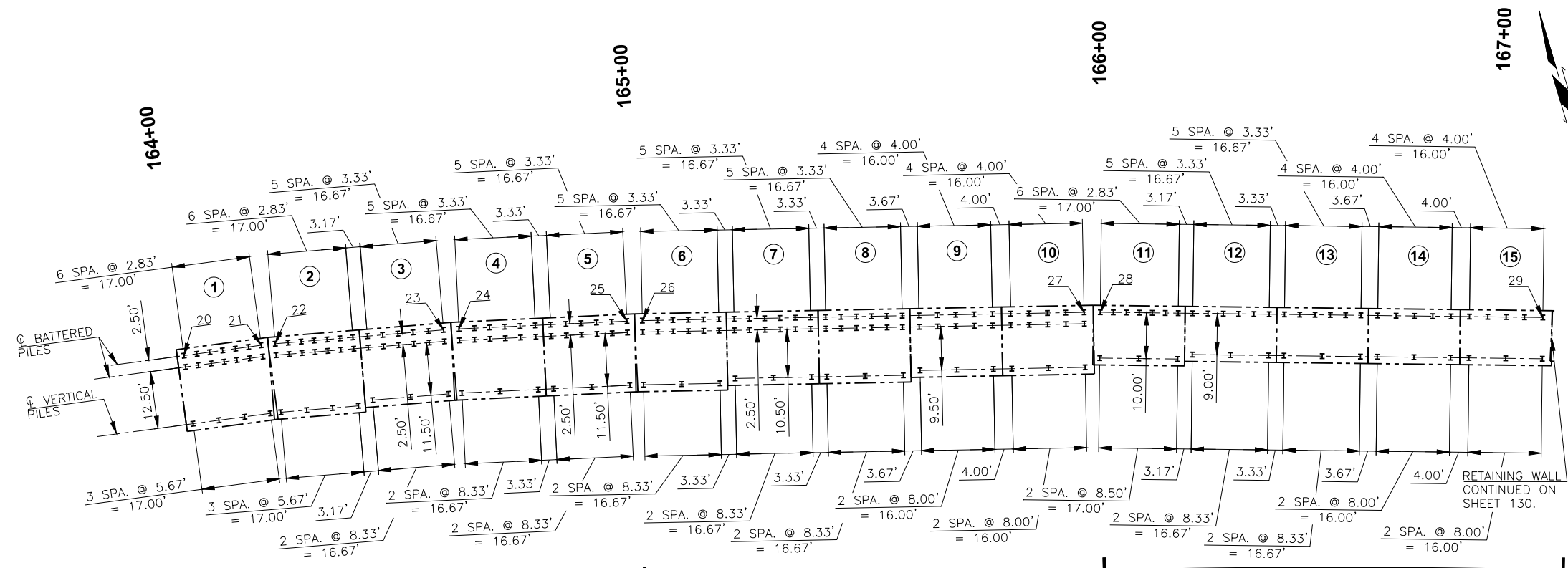
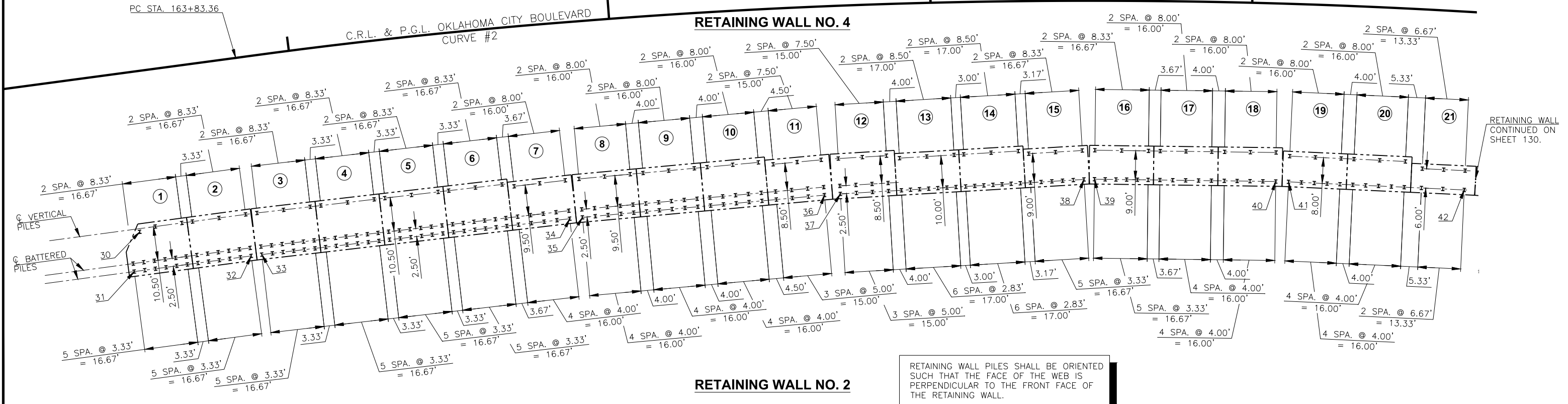


DESCRIPTION	REVISIONS	DATE



STATION CALL OUTS FOR PILES		
POINT	STATION	OFFSET
20	164+06.21	61.72' LT.
21	164+22.69	61.98' LT.
22	164+25.65	61.96' LT.
23	164+61.38	61.18' LT.
24	164+64.64	61.08' LT.
25	165+00.21	59.71' LT.
26	165+03.47	59.57' LT.
27	165+97.04	56.57' LT.
28	166+00.48	56.50' LT.
29	166+94.35	55.23' LT.
30	163+46.61	49.58' RT.
31	163+43.27	61.58' RT.
32	163+79.95	61.58' RT.
33	163+83.26	61.61' RT.
34	164+82.64	60.91' RT.
35	164+86.74	60.82' RT.
36	165+64.53	58.59' RT.
37	165+69.64	58.42' RT.
38	166+47.65	55.49' RT.
39	166+50.99	55.42' RT.
40	167+08.93	55.29' RT.
41	167+13.01	55.28' RT.
42	167+69.23	55.30' RT.



RETAINING WALL PILES SHALL BE ORIENTED SUCH THAT THE FACE OF THE WEB IS PERPENDICULAR TO THE FRONT FACE OF THE RETAINING WALL.

DESIGN	B.J.K.	CROSTOWN BOULEVARD EASTBOUND OKLAHOMA COUNTY OVER CLASSEN BLVD. SUBSTRUCTURE LAYOUT RETAINING WALL NO. 2 AND 4 (SHEET 1 OF 2) JOB PIECE NO. 17428(88) SHEET NO. 129
DRAWN	R.A.P.	
CHECKED	B.J.K.	
APPROV.	T.A.C.	
SQUAD	CEC	